

The image features a white background with a large, diagonal split. The upper-left portion is white, while the lower-right portion is a solid, warm brown color. On the left side, there are two overlapping triangles: a light blue one on top and a teal one below it. The text is positioned in the white area, following the diagonal split.

**CCICH ADVISORY BOARD
RETREAT & MEETING**

OCTOBER 17, 2014



COC BOARD ORIENTATION

RESPONSIBILITIES; CONTRA COSTA IN CONTEXT

WHAT IS A CONTINUUM OF CARE?

- Planning body that coordinates the community's policies, strategies, and activities for ending homelessness.
- It is responsible for all of the activities set forth in the federal HEARTH regulations and CoC Interim Rule.



PRIMARY RESPONSIBILITIES OF COC

- Operating the CoC
- Designating and operating a Homeless Management Information System (HMIS)
- CoC Planning
- Application for Funds



OPERATING THE COC

- Conduct semi-annual meetings of the full membership
- Issue public invitation for new members at least annually
- Adopt and follow written process to select board
- Appoint additional committees, subcommittees, or workgroups
- Develop, follow, and update annually a governance charter



OPERATING (CONTINUED)

- Consult with CoC and ESG project recipients and subrecipients to establish performance targets, monitor performance, evaluate outcomes, and take action against poor performers.
- Evaluate and report to HUD outcomes of ESG and CoC projects
- Establish centralized or coordinated assessment system
- Establish and follow written standards for providing CoC assistance



ROLE OF THE COC BOARD

- Acts on behalf of the CoC as the official decision-making body
- Representative of the relevant organizations and of projects serving homeless subpopulations
- Include at least one homeless or formerly homeless individual
- Must use a written process that is reviewed, updated, and approved by the CoC at least once every 5 years
- Must comply with conflict of interest requirements



CONFLICT OF INTEREST

- Board members cannot:
 - Influence or participate in funding discussions/decisions that may benefit an agency the member has an interest in or represents
 - Solicit/accept gifts for personal benefit in excess of minimal value
 - Engage in behavior demonstrating an actual conflict of interest or giving the appearance of any such conflict
- If there is a conflict, you must excuse yourself from the discussion



HMIS

- The CoC must:
 - Designate a single HMIS
 - Select an eligible applicant to manage the HMIS
 - Monitor recipient and subrecipient participation in the HMIS
 - Review and approve privacy, security, and data quality plans



COC PLANNING


- Coordinate implementation of a housing and service system within the geographic area
- Conduct an annual Point-in-Time Count
- Conduct annual gaps analysis
- Provide information required to complete the Consolidated Plan
- Consult with ESG recipients regarding allocation of ESG funds and evaluation of performance of ESG recipients and subrecipients



APPLICATION FOR FUNDS

- Preparing and overseeing an application for CoC Program funds including
 - Determining the collaborative process
 - Prioritizing projects
 - Requires creation of a non-conflicted panel
 - Designating a Collaborative Applicant to apply for planning funds



The background features a large gold-colored shape on the right side, which is a trapezoid with a slanted top edge. On the left side, there are two overlapping teal-colored triangles. The top triangle is a lighter shade of teal, and the bottom one is a darker shade. The text is positioned in the white space between these shapes.

**FEDERAL & STATE HOMELESS
FUNDING DOLLARS ANALYSIS**

FUNDING SOURCES

HUD:
Affordable
Housing

HOME

HOPWA

HUD:
Community
Development

CDBG

NSP

HUD:
Homeless
Assistance

CoC

ESG

VA

SSVF

HUD-
VASH

State of CA

ESG

TOTAL FUNDING IN 2012/2013

Funding Source	Award Amount
CoC Program	\$9,142,997
CDBG	\$5,094,380
ESG	\$201,300
HOME	\$2,198,262
HOPWA	\$500,000
State ESG	\$302,523
VA: SSVF	\$2,431,179
Total	\$19,870,641

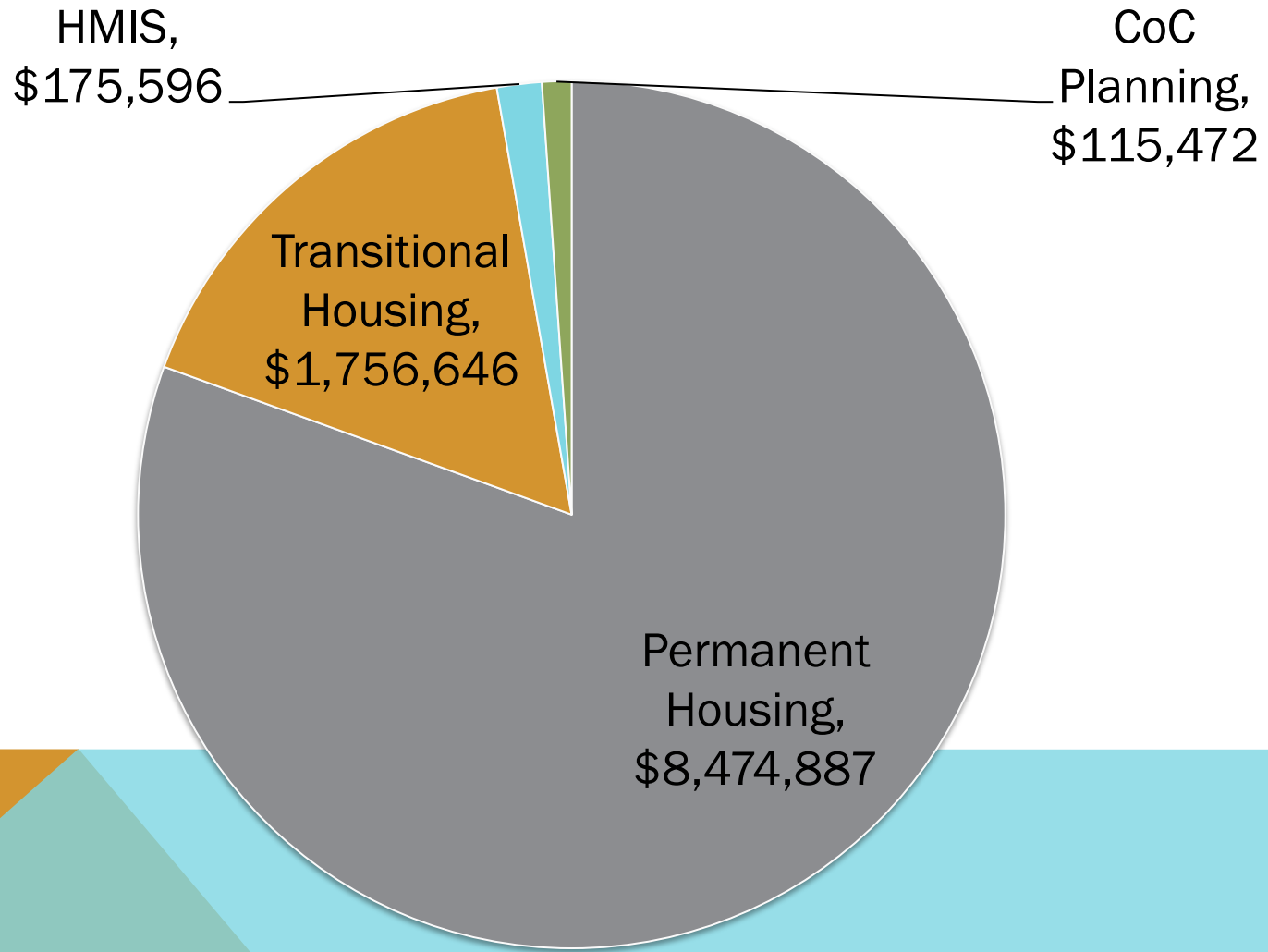


CONTRA COSTA COUNTY FEDERAL HUD FUNDS

Funding Source	2012/2013	2013/2014 (projected)
CoC Program	\$9,142,997	\$10,522,601
CDBG	\$2,912,880	\$2,759,312
ESG	\$201,300	\$256,559
HOME	\$1,797,138	\$1,681,500
HOPWA	\$500,000	\$500,000
Total	\$14,554,315	\$15,719,972

2012/2013 Source: <https://www.onecpd.info/grantees/>
2013/2014 Source: http://www.ccreach.org/ccp_publications/index.cfm

2013 COC PROGRAM AWARDS BY COMPONENT



Source: <https://www.onecpd.info/onecpd/assets/File/2013-all-coc-grants.pdf>
<https://www.onecpd.info/onecpd/assets/File/2013-all-coc-grants-final-announcement.pdf>

2013 COC PROGRAM TIER 1 AWARDS

Rank	Type	Project	Request	Award	Difference
1	CoC Planning	Contra Costa CoC Planning Application	\$115,472.00	\$115,472.00	\$0.00
2	New	Reach Plus Family Rapid Rehousing	\$333,571.00	\$367,387.00	\$33,816.00
3	Renewal	Pittsburg Family Center	\$82,336.00	\$82,336.00	\$0.00
4	New	GRIP Reallocation Permanent Supportive Housing	\$74,892.00	\$74,892.00	\$0.00
5	Renewal	Contra Costa Rapid Re-Housing	\$173,567.00	\$173,567.00	\$0.00
6	Renewal	Project Independence	\$666,691.00	\$666,691.00	\$0.00
7	Renewal	REACH Plus	\$355,838.00	\$355,838.00	\$0.00
8	Renewal	Contra Costa HMIS	\$175,596.00	\$175,596.00	\$0.00
9	Renewal	Contra Costa County Transitional Housing Program	\$401,204.00	\$401,204.00	\$0.00
10	New	Contra Costa Tenant-Based Rental Assistance	\$368,726.00	\$416,474.00	\$47,748.00

Source: <https://www.onecpd.info/onecpd/assets/File/2013-all-coc-grants.pdf>
<https://www.onecpd.info/onecpd/assets/File/2013-all-coc-grants-final-announcement.pdf>

COC TIER 1 AWARDS (CONT'D)

Rank	Type	Project	Request	Award	Difference
11	New	Contra Costa Project-Based Rental Assistance	\$127,770.00	\$144,054.00	\$16,284.00
12	Renewal	Garden Park Apartments	\$223,799.00	\$254,764.00	\$30,965.00
13	Renewal	Transitional Housing Partnership	\$277,699.00	\$313,239.00	\$35,540.00
14	Renewal	Lakeside Apts	\$141,155.00	\$141,155.00	\$0.00
15	Renewal	Permanent Connections	\$176,681.00	\$200,100.00	\$23,419.00
16	Renewal	Moving Out of Violent Environments (MOVE) - RMC Transitional Housing	\$77,010.00	\$77,010.00	\$0.00
17	Renewal	ACCESS Plus	\$103,990.00	\$114,494.00	\$10,504.00
18	Renewal	GRIP Permanent Supportive Housing	\$97,188.00	\$108,251.00	\$11,063.00
19	Renewal	ACCESS	\$455,894.00	\$505,876.00	\$49,982.00
20	Renewal	Project Coming Home - Addressing Addictions to Alcohol	\$511,063.00	\$581,873.00	\$70,810.00
21	Renewal	Project CHOICE	\$119,309.00	\$134,223.00	\$14,914.00

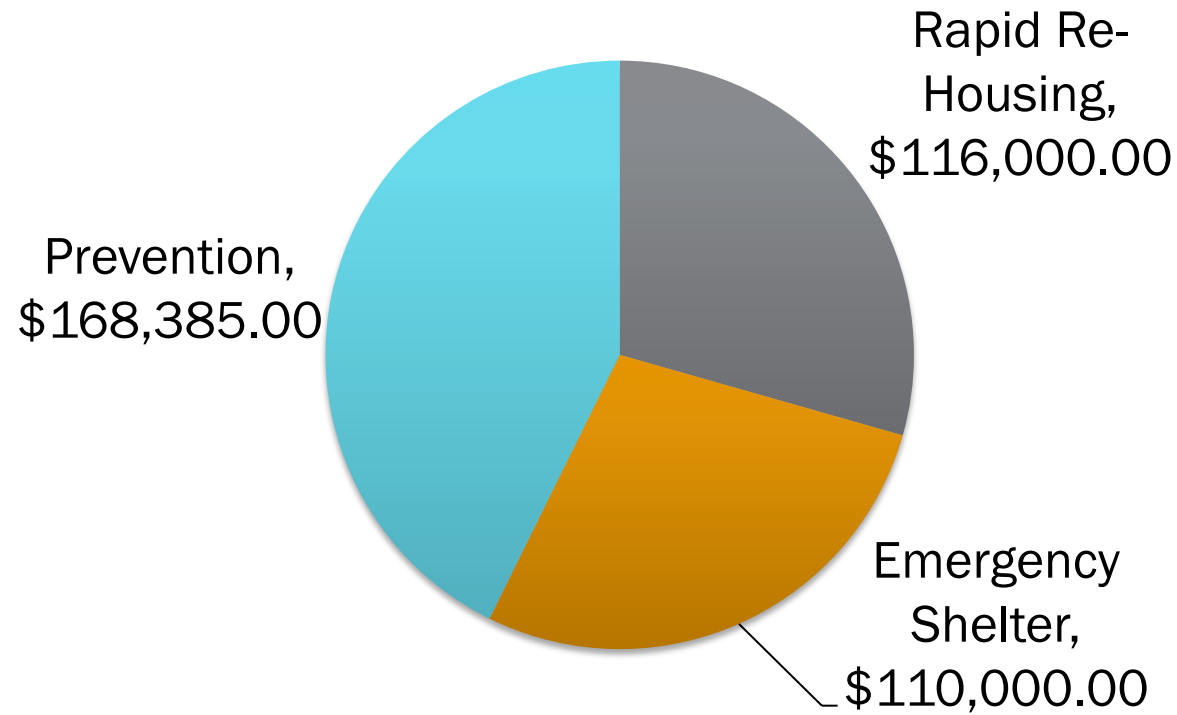
Source: <https://www.onecpd.info/onecpd/assets/File/2013-all-coc-grants.pdf>
<https://www.onecpd.info/onecpd/assets/File/2013-all-coc-grants-final-announcement.pdf>

COC TIER 1 (CONT'D) & TIER 2 AWARDS

Rank	Type	Project	Request	Award	Difference
22	Renewal	Villa Vasconcellos	\$69,351.00	\$79,731.00	\$10,380.00
23	Renewal	Giant Road Apartments	\$96,300.00	\$96,300.00	\$0.00
24	Renewal	Idaho Apartments	\$194,836.00	\$194,836.00	\$0.00
25	Renewal	S+C Lakeside	\$55,572.00	\$63,876.00	\$8,304.00
26	Renewal	West Richmond	\$44,851.00	\$47,208.00	\$2,357.00
27	Renewal	S+C Consolidated	\$3,013,779.00	\$3,463,347.00	\$449,568.00
28	Renewal	S+C PCH	\$420,369.00	\$483,177.00	\$62,808.00
29	Renewal	Permanent Step Project	\$129,632.00	\$145,348.00	\$15,716.00
Tier 2					
30	Renewal	S+C CHI 1	\$215,558.00	\$247,754.00	\$32,196.00
31	Renewal	Destination Home	\$266,488.00	\$296,528.00	\$30,040.00
Total Awards:			\$9,566,187.00	\$10,522,601.00	\$956,414.00

Source: <https://www.onecpd.info/onecpd/assets/File/2013-all-coc-grants.pdf>
<https://www.onecpd.info/onecpd/assets/File/2013-all-coc-grants-final-announcement.pdf>

2013-2014 STATE ESG AWARDS



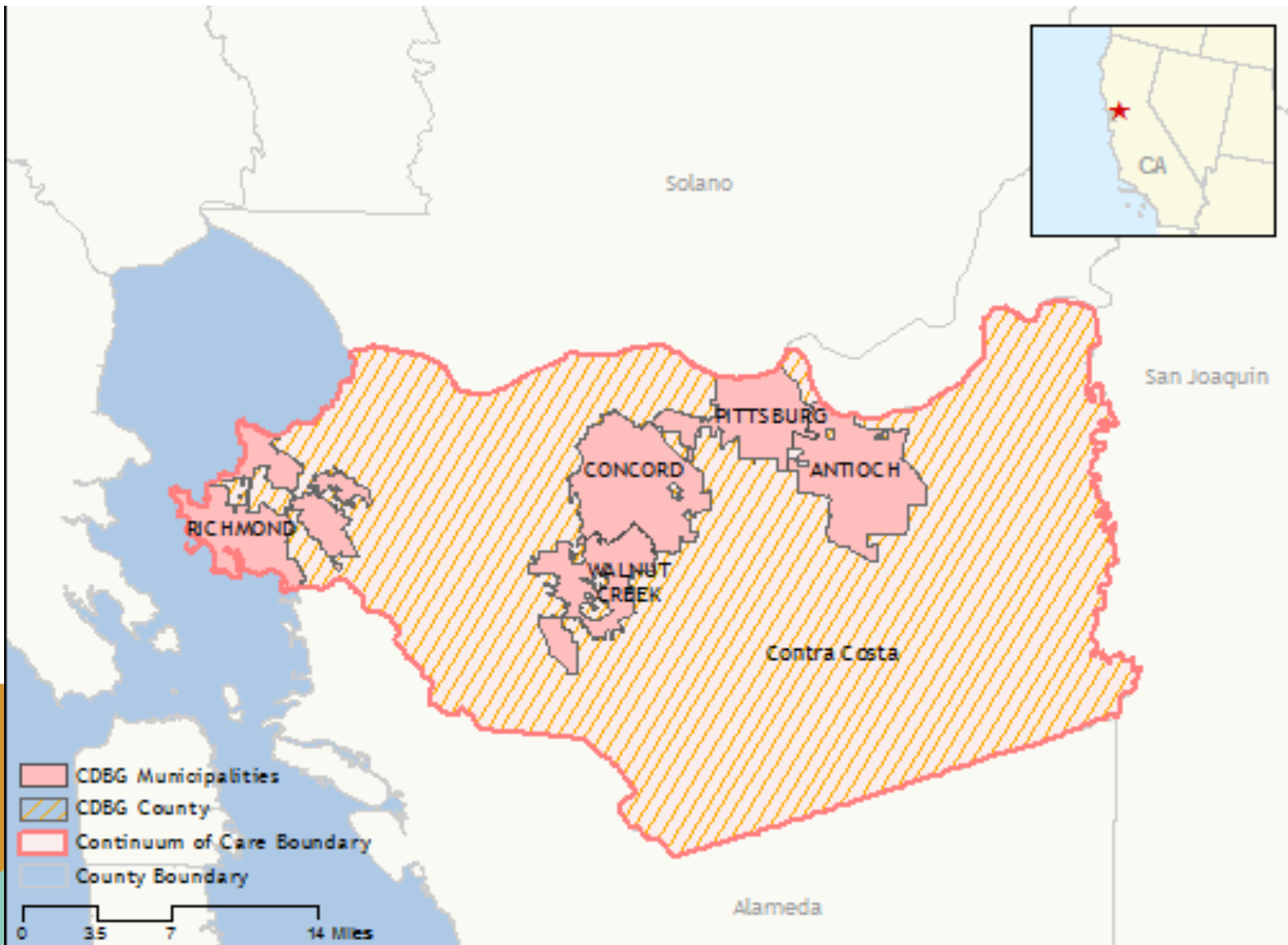
Source: http://www.hcd.ca.gov/fa/esg/ESG_2013-14_Award_List.pdf

2013-2014 STATE ESG AWARDS

Type	Project	Request	Award	Difference
Prevention	SHELTER, Inc.	\$168,385	\$168,385	\$0
Rapid Re-Housing	SHELTER, Inc.	\$116,000	\$116,000	\$0
Emergency Shelter	Trinity Center	\$110,000	\$110,000	\$0
Outreach	Central County Homeless Outreach	\$168,385	\$0	\$168,385
Total Awards:		\$562,770	\$394,385	\$168,385

Source: http://www.hcd.ca.gov/fa/esg/ESG_2013-14_Award_List.pdf

CDBG JURISDICTION MAP



2013 CDBG & HOME BY JURISDICTION

Jurisdiction	CDBG Funds	HOME Funds
Antioch	\$737,881	
Concord	\$871,573	
Pittsburg	\$539,436	
Richmond	\$1,077,675	\$401,124
Walnut Creek	\$246,968	
Total	\$3,473,533	\$401,124

Source: <https://www.onecpd.info/grantees/>

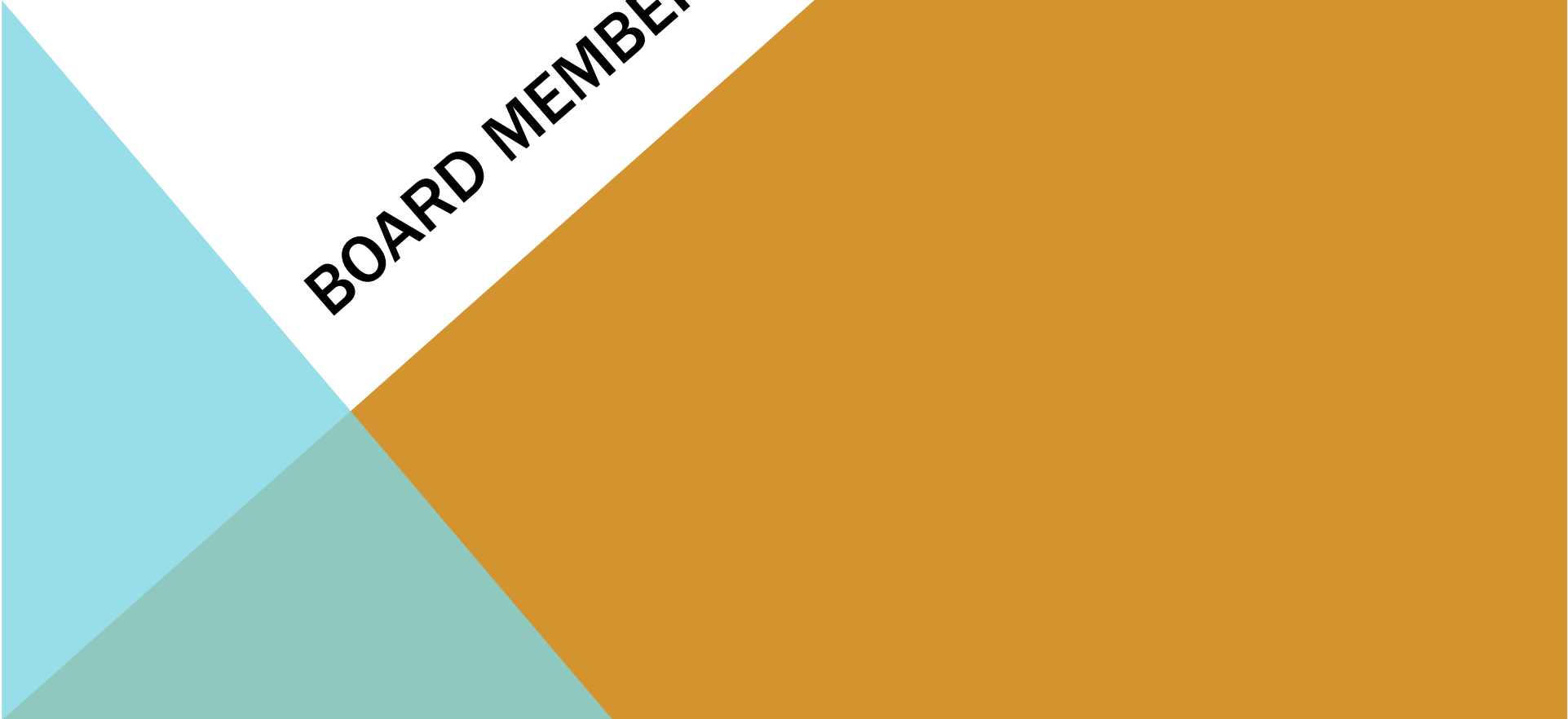
VA: SSVF 2013

Program	SSVF Funds
East Bay Community Recovery Project*	\$1,032,000
SHELTER, Inc.	\$861,532
Swords to Plowshares*	\$537,647
Total	\$2,431,179

*Note: Funds include allocation for both Oakland/Alameda County and Richmond/Contra Costa County.

Source: http://www.va.gov/homeless/docs/ssvf/2013_ssvf_awards_final_71113.pdf

BOARD MEMBERSHIP



CCICH EXECUTIVE COMMITTEE

Seat

Housing Provider

At-Large No. 1

At-Large No. 2

At-Large No. 3

County Government 1

County Government 2

Health Care Representative

Law Enforcement Representative

Non-Profit Developer or Homeless Service Provider

Faith Community Representative

Consumer 1

Consumer 2

Consumer Advocate

Name

Joseph Villarreal

Teri House

Vacant

Janet Kennedy

Kevin Corrigan

Brenda Kain

Dr. Nishant Shah

Robin Heinemann

Doug Stewart

Stephan Peers

John Garth

Sean Connors

Megan Monahan

Alternates

Consumer Advocate - Alternate

Consumer - Alternate

Name

Valerie Sloven

Michael Pollard



CCICH BRANDING



Contra Costa Council
on Homelessness



CONTRA COSTA
COUNCIL ON
HOMELESSNESS



CONTRA COSTA
COUNCIL ON
HOMELESSNESS